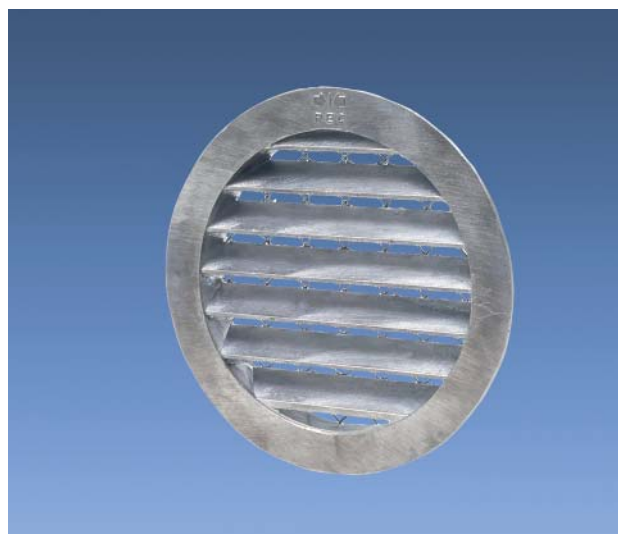


# YGAV

## External wall grille



### Uses

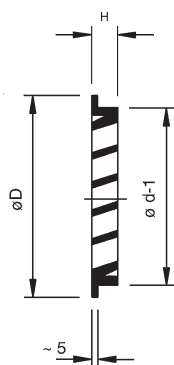
YGAV is mainly used as an intake grille for fresh air.

### Design

YGAV is moulded of aluminium and it has a circular connection which fits directly into the duct. The back of the grille is equipped with a stainless steel wire net, as protection against small animals.

### Installation

YGAV fits in round openings and is fixed with screws.



Size	ØD (mm)	H (mm)	Weight (g)
80	96	15	100
100	125	20	150
125	150	20	180
160	185	20	300
200	225	20	500
250	275	20	1000
315	350	20	1500
400	440	40	3000

### When ordering, please state:

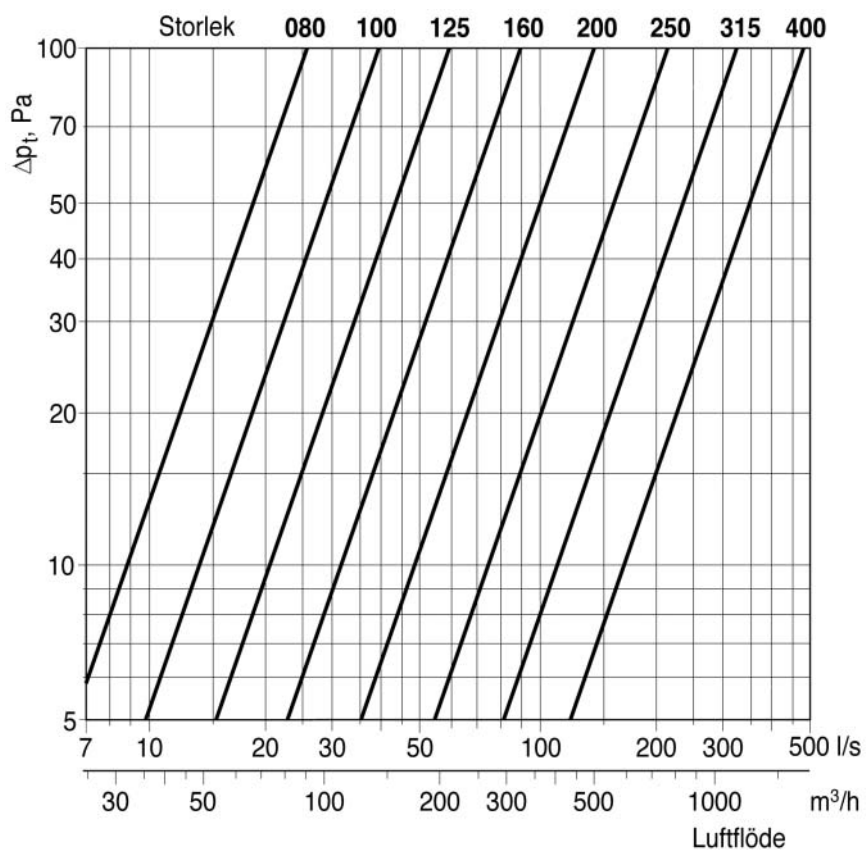
Art. No. YGAV - 125

Product

Size

# Sizing diagram

YGAV



Storlek = size (mm)  
Luftflöde = air flow