

# SUPPLY AIR DEVICES SAS and SES

## FOR CEILING AND WALL INSTALLATION



SAS - for installation to the ductwork



SES - for installation in wall or ceiling

Supply air device for small air flows.

With a long narrow pattern.

Adjustment by plugging required number of nozzles.

The removable front face is easy to clean.

### Material and surface treatment

Manufactured of sheet steel. As standard painted white RAL 9010. Other RAL colours are available at additional costs.

### Order key

Supply air device SAS - 100  
1 2

1 = Supply air device SAS or SES

2 = Size 100 - 200


### Quick guide

Size	Airflow l/s	
	min	max
100	4	20
125	10	35
160	20	55
200	40	80

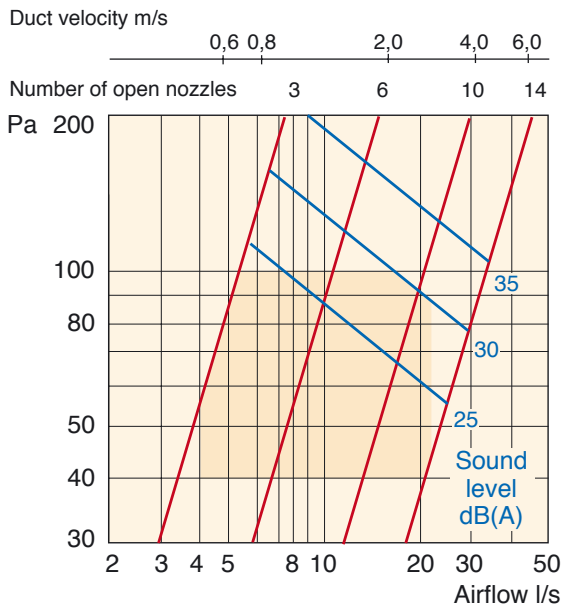
# SUPPLY AIR DEVICES SAS and SES

## Performance

The graphs are not to be used for commissioning.

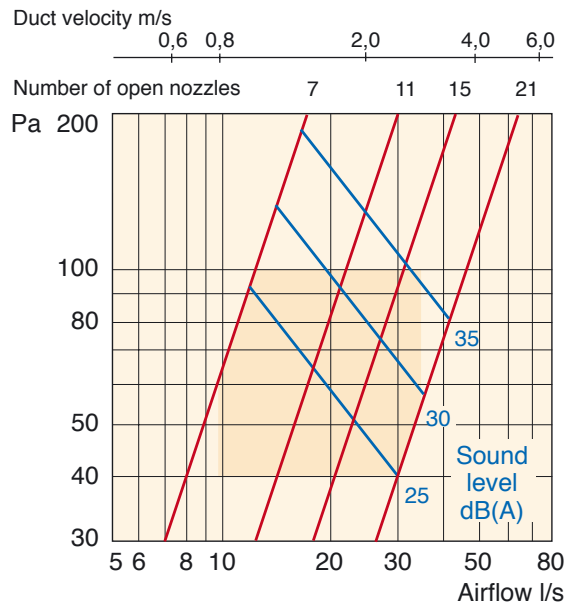
 Recommended air flow

### SAS/SES-100



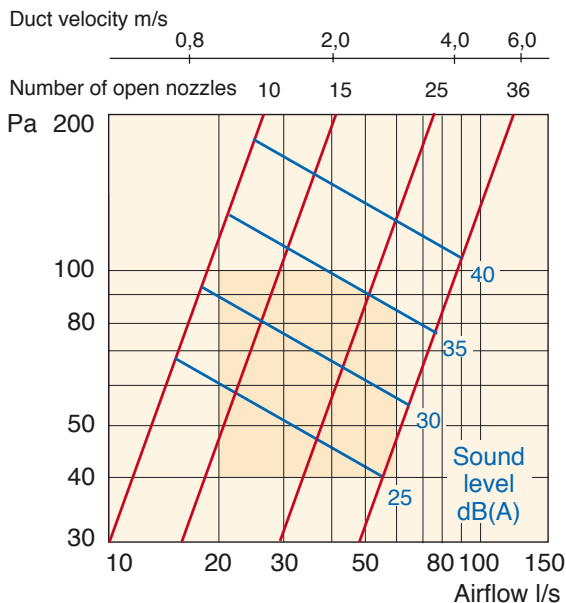
f, Hz	Sound power level							
	63	125	250	500	1 k	2 k	4 k	8 k
K <sub>okt</sub> , dB	1	4	5	4	-3	-6	-12	-22
tol. dB	±4	±3	±2	±1	±1	±1	±4	±10
Sound attenuation								
ΔL, dB	22	17	11	5	3	3	8	5

### SAS/SES-125



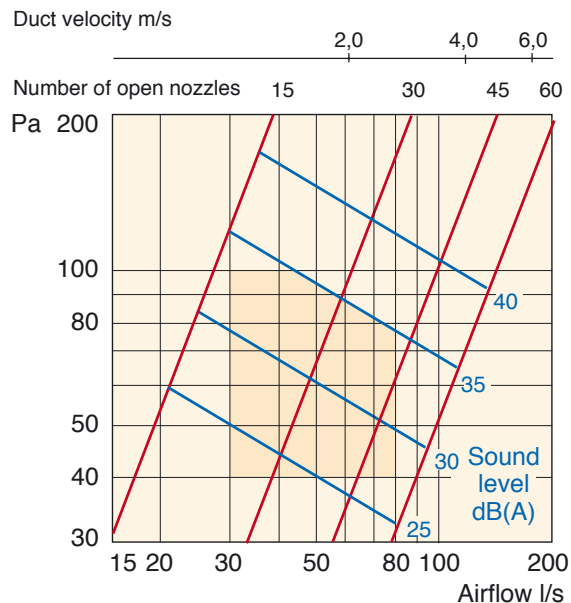
f, Hz	Sound power level							
	63	125	250	500	1 k	2 k	4 k	8 k
K <sub>okt</sub> , dB	-8	-4	0	1	-1	-2	-10	-21
tol. dB	±4	±3	±2	±1	±1	±1	±4	±10
Sound attenuation								
ΔL, dB	20	15	9	3	1	1	5	3

### SAS/SES-160



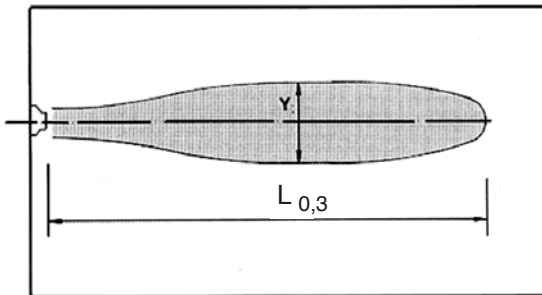
f, Hz	Sound power level							
	63	125	250	500	1 k	2 k	4 k	8 k
K <sub>okt</sub> , dB	-1	1	4	3	-2	-3	-10	-22
tol. dB	±4	±3	±2	±1	±1	±1	±4	±10
Sound attenuation								
ΔL, dB	18	13	7	3	2	3	3	3

### SAS/SES-200



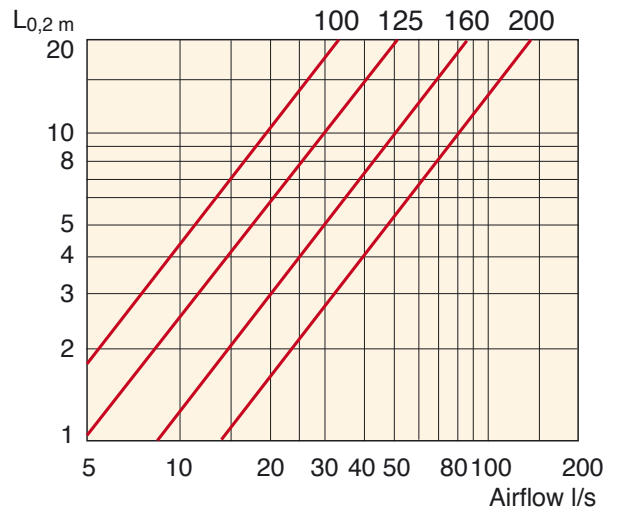
f, Hz	Sound power level							
	63	125	250	500	1 k	2 k	4 k	8 k
K <sub>okt</sub> , dB	-3	0	3	2	-2	-3	-9	-20
tol. dB	±4	±3	±2	±1	±1	±1	±4	±10
Sound attenuation								
ΔL, dB	16	11	5	3	2	3	3	3

## Air distribution pattern



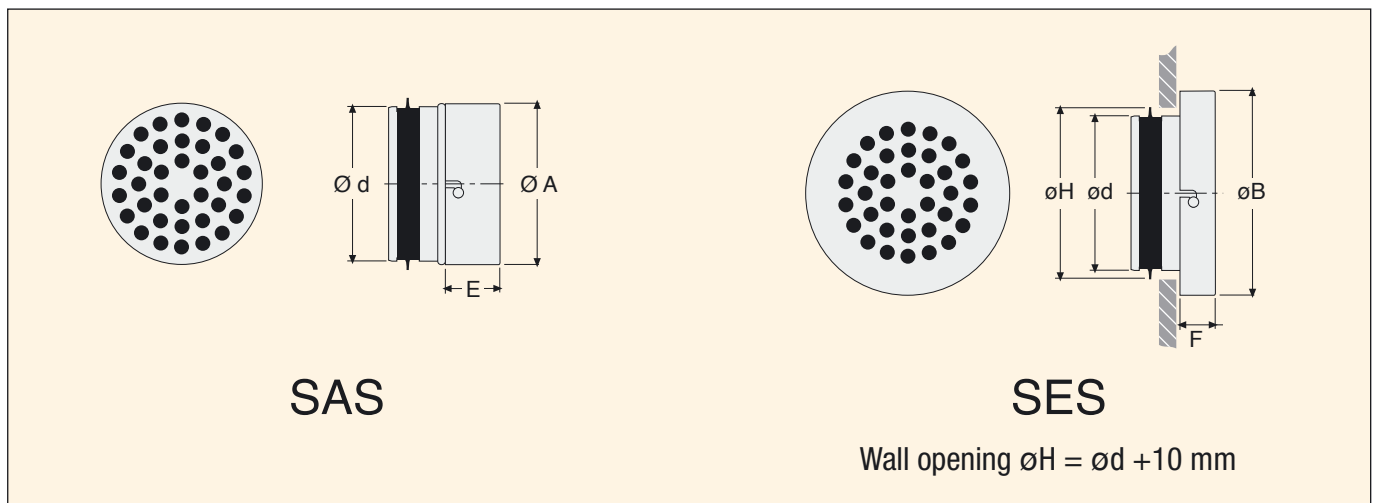
## Throw

Valid for wall installation with the face 200 mm from the ceiling



## Dimensions

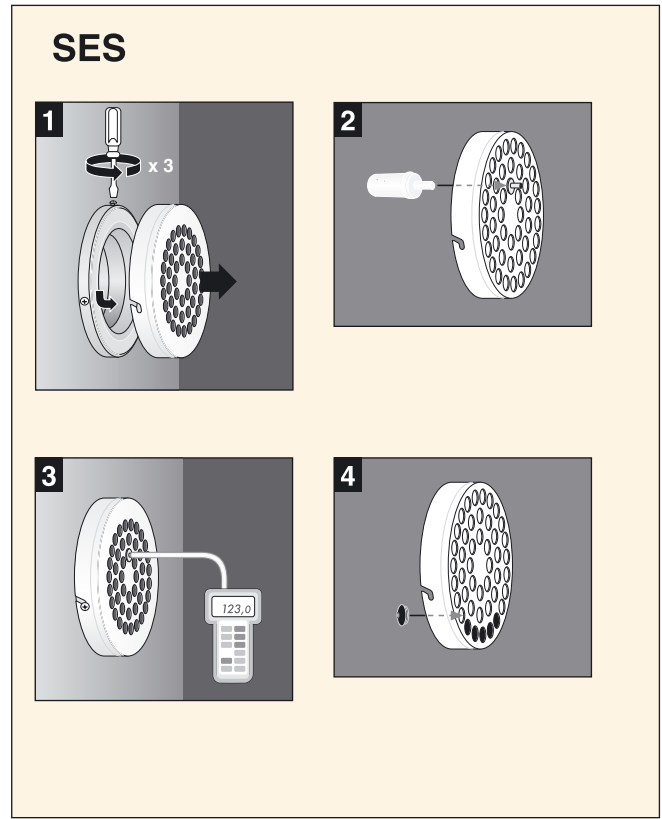
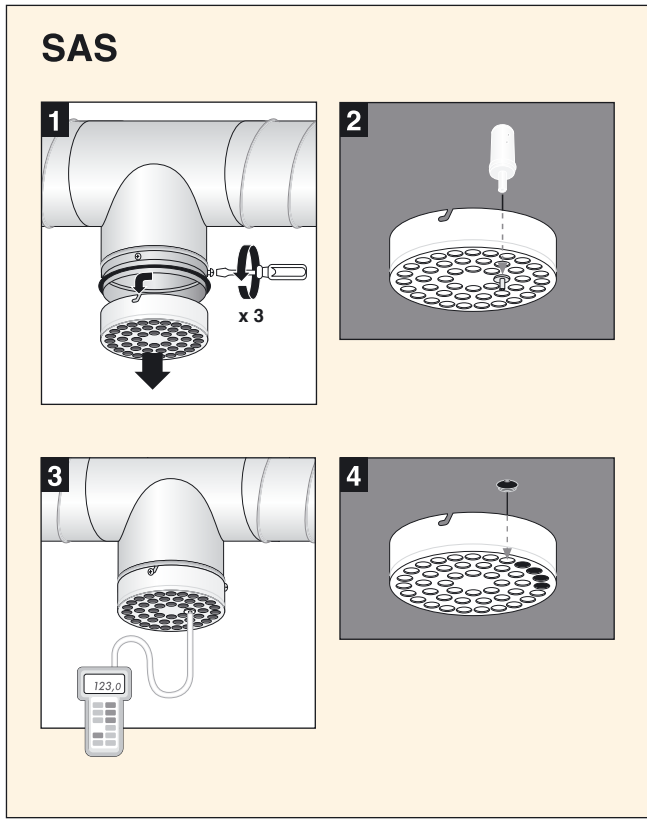
Size	$\varnothing d$	$\varnothing A$	E	B
100	99	105	50	130
125	124	130	50	165
160	159	165	50	205
200	199	205	50	255



SAS for installation to the ductwork  
 SES for installation in wall or ceiling

## Commissioning

For measurement please use the measurement plug



## Maintenance

Wipe the face at least once a year with moist cloth