

- 4-way pattern diffusers
- Square
- Aluminium
- White, RAL 9010

Accessories

- DSF**
Volume control dampers
- REF**
Plenum boxes



4-Way ceiling diffusers with fixed core type APW-4

4-way ceiling diffusers with fixed core and central screw mounting.

Application

- For air supply and exhaust in ventilation and air conditioning systems.

Material

- Aluminium and steel combination

Colour

- White, RAL 9010

Composition

- Frame made of aluminium
- Fixed inner core made of steel
- Fixed 4-way directional blades

Mounting

- Fixing by central screw in the crossbar of the plenum box.

Accessories

- Opposite blade volume control damper type **DSF**
- Plenum box with side duct connection type **REF**

Text for tender

- The air supply ceiling diffusers are square with a fixed 4-way pattern with a fixed core. They are made of aluminium and steel in white finish RAL 9010 and are supplied with a volume control damper and a plenum box with a crossbar.
- **ATC Type APW-4+DSF+REF**



Order example

- APW-4, 444 + REF + DSF

Explanation

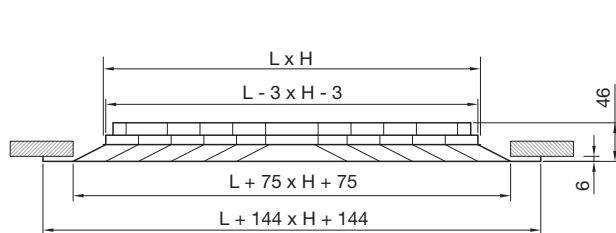
APW-4 = Diffuser type

444 = Diffuser size

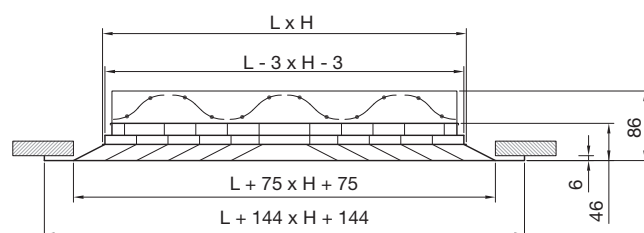
Accessories (Optional)

REF = Plenum box

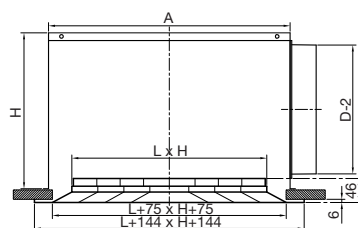
DSF = Volume control damper



■ APW-4



■ APW-4 + DSF



Quick selection

Qv	Type	294	369	444	519	595
	LXH	150x150	225x225	300x300	375x375	450x450
100	Aeff	0.01	0.02	0.04	0.07	0.10
	Lth	0.50				
	Ps	4.50				
	veff	2.50				
160	Lw	18				
	Lth	0.80	0.50			
	Ps	12	2.30			
	veff	4.10	1.80			
200	Lw	29	13			
	Lth	1	0.70	0.50		
	Ps	18	3.60	1.10		
	veff	5.10	2.30	1.30		
300	Lw	35	18	6		
	Lth	1.50	1	0.70	0.60	
	Ps	41	8.20	2.60	1.10	
	veff	7.60	3.40	1.90	1.20	
400	Lw	45	28	16	7	
	Lth		1.30	1	0.80	0.70
	Ps		14	4.60	1.90	0.90
	veff		4.60	2.60	1.60	1.10
500	Lw		35	24	15	7
	Lth		1.70	1.20	1	0.80
	Ps		23	7.10	2.90	1.40
	veff		5.70	3.20	2	1.40
600	Lw		41	29	20	13
	Lth			1.50	1.20	1
	Ps			10	4.20	2
	veff			3.80	2.50	1.70
700	Lw			34	25	17
	Lth			1.70	1.40	1.20
	Ps			14	5.70	2.80
	veff			4.50	2.90	2
800	Lw			37	28	21
	Lth			2	1.60	1.30
	Ps			18	7.50	3.60
	veff			5.10	3.30	2.30
900	Lw			41	32	24
	Lth				1.80	1.50
	Ps				9.50	4.60
	veff				3.70	2.60
1000	Lw				35	27
	Lth				2	1.70
	Ps				12	5.60
	veff				4.10	2.80
1200	Lw				37	30
	Lth				2.40	2
	Ps				17	8.10
	veff				4.90	3.40
1400	Lw				42	34
	Lth				2.80	2.30
	Ps				23	11
	veff				5.70	4
1600	Lw				46	38
	Lth					2.70
	Ps					14
	veff					4.50
2000	Lw					41
	Lth					3
	Ps					18
	veff					5.10
	Lw					44